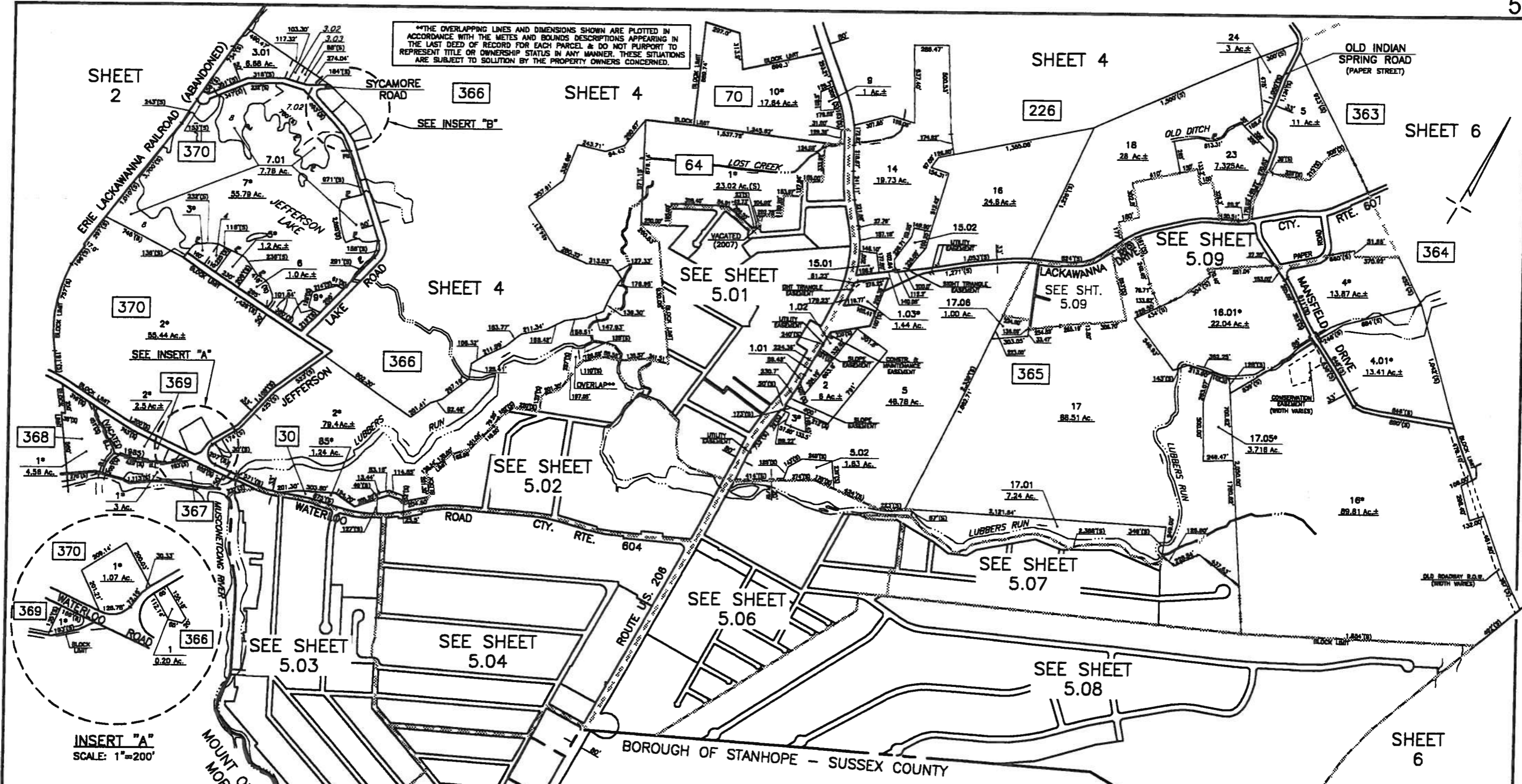
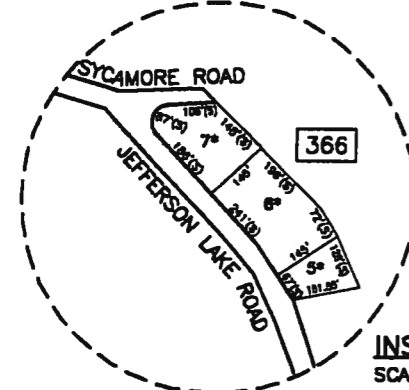


**THE OVERLAPPING LINES AND DIMENSIONS SHOWN ARE PLOTTED IN ACCORDANCE WITH THE METES AND BOUNDS DESCRIPTIONS APPEARING IN THE LAST DEED OF RECORD FOR EACH PARCEL & DO NOT PURPORT TO REPRESENT TITLE OR OWNERSHIP STATUS IN ANY MANNER. THESE SITUATIONS ARE SUBJECT TO SOLUTION BY THE PROPERTY OWNERS CONCERNED.



INSERT "A" SCALE: 1"=200'



INSERT "B" SCALE: 1"=200'

| EXEMPT LOTS * | | | |
|---------------|-------|---------|----------------------------|
| BLOCK | LOT | ACREAGE | REASON FOR EXEMPTION |
| 30 | 85 | 1.238 | STATE OF NEW JERSEY D.E.P. |
| 84 | 1 | 23.02 | STATE OF NEW JERSEY D.E.P. |
| 70 | 10 | 17.84 | STATE OF NEW JERSEY D.E.P. |
| 384 | 4 | 13.87 | TOWNSHIP OF BYRAM |
| 384 | 4.01 | 13.41 | BOARD OF EDUCATION |
| 385 | 1.03 | 1.45 | STATE OF NEW JERSEY D.O.T. |
| 385 | 3 | 0.485 | TOWNSHIP OF BYRAM |
| 385 | 18 | 89.81 | BOARD OF EDUCATION |
| 385 | 18.01 | 22.04 | TOWNSHIP OF BYRAM |
| 385 | 17.05 | 3.718 | STATE OF NEW JERSEY D.O.T. |
| 388 | 2 | 79.4 | STATE OF NEW JERSEY D.E.P. |
| 388 | 5 | 0.3 | STATE OF NEW JERSEY D.E.P. |
| 388 | 6 | 0.8 | STATE OF NEW JERSEY D.E.P. |
| 388 | 7 | 0.384 | STATE OF NEW JERSEY D.E.P. |
| 387 | 1 | 3 | STATE OF NEW JERSEY D.E.P. |
| 388 | 1 | 4.56 | STATE OF NEW JERSEY D.E.P. |
| 389 | 1 | 3 | STATE OF NEW JERSEY D.E.P. |
| 389 | 2 | 2.54 | STATE OF NEW JERSEY D.E.P. |
| 370 | 1 | 1.07 | STATE OF NEW JERSEY D.E.P. |
| 370 | 2 | 55.44 | STATE OF NEW JERSEY D.E.P. |
| 370 | 3 | 1.1 | STATE OF NEW JERSEY D.E.P. |
| 370 | 5 | 1.2 | STATE OF NEW JERSEY D.E.P. |
| 370 | 7 | 55.78 | STATE OF NEW JERSEY D.E.P. |
| 370 | 9 | 0.617 | STATE OF NEW JERSEY D.E.P. |

MAP REFERENCES:

- THE DETAILS SHOWN ON THESE MAPS ARE BASED ON THE APPROVED ORIGINAL TAX MAPS AND THE GENERAL REVISIONS THEREOF, PRIOR TO JUNE 2008. FOR REVISIONS AND CONDITIONS PRIOR TO JUNE 2008, SEE APPROVED ORIGINAL MAPS ON FILE IN THE MUNICIPAL TAX ASSESSOR'S OFFICE.
- THE AREAS, BOUNDARIES, AND DIMENSIONS SHOWN ON THESE MAPS ARE DERIVED FROM AERIAL SURVEYS, RECORDED PLANS, MAPS, DEEDS, AND WILLS AND ARE TO BE USED FOR ASSESSMENT PURPOSES ONLY.

| DATE | REVISED |
|-------------|---------|
| AUGUST 2013 | |
| AUGUST 2011 | |
| MARCH 2010 | |

HAROLD E. PELLOW & ASSOCIATES, INC. HAROLD E. PELLOW - N.J. PROFESSIONAL ENGINEER & LAND SURVEYOR, LIC. NO. 13229

TAX MAP
TOWNSHIP OF BYRAM

SUSSEX COUNTY
SCALE: 1" = 400'

HAROLD E. PELLOW

NEW JERSEY PROFESSIONAL ENGINEER AND LAND SURVEYOR, LIC. #13229
HAROLD E. PELLOW & ASSOCIATES, INC.
17 PLAINS ROAD, AUGUSTA, NEW JERSEY
CERTIFICATE OF AUTHORIZATION NO. 2404708000

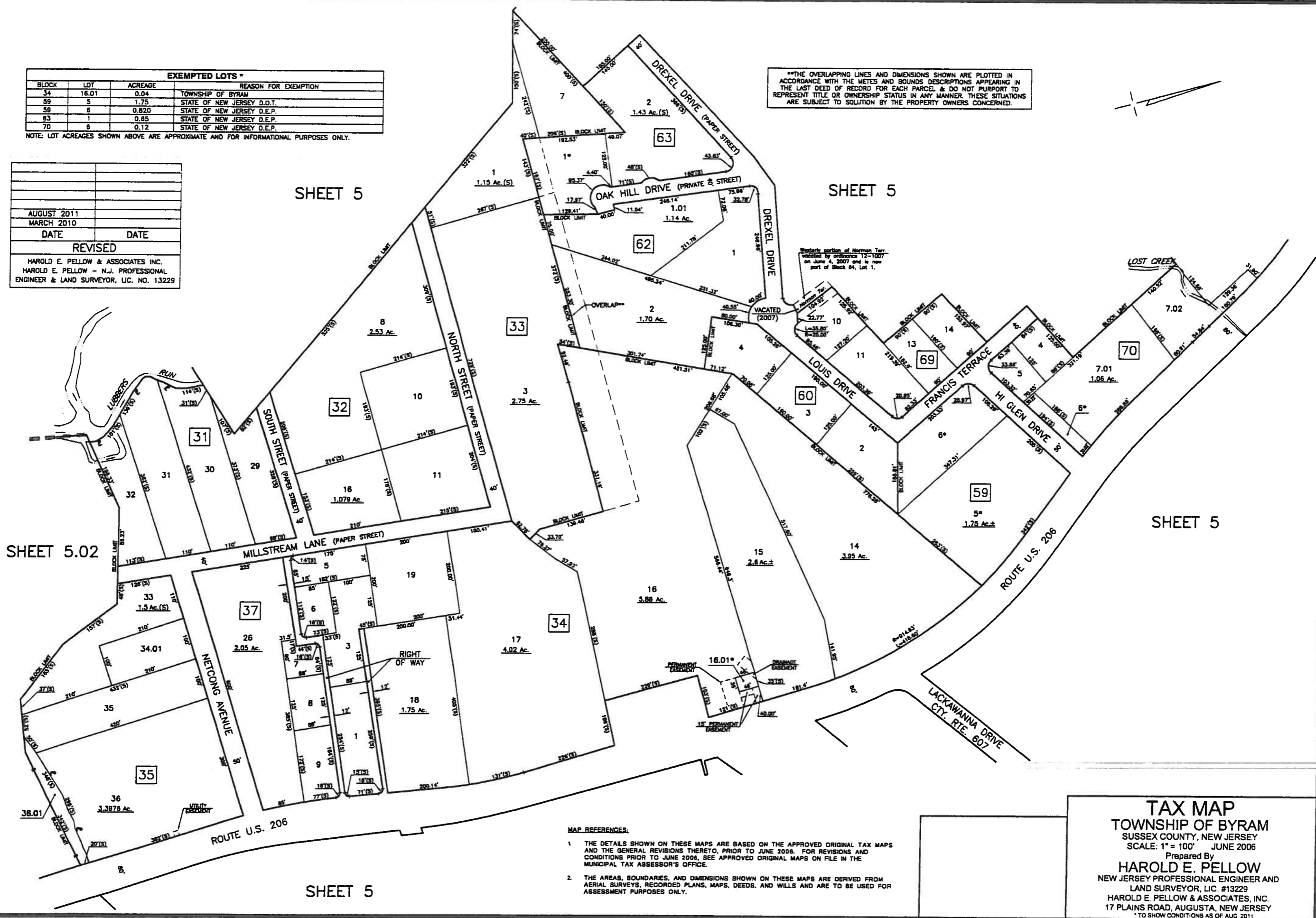
NEW JERSEY
JUNE 2008

| EXEMPTED LOTS * | | | |
|-----------------|-------|---------|----------------------------|
| BLOCK | LOT | ACREAGE | REASON FOR EXEMPTION |
| 34 | 16.01 | 0.04 | TOWNSHIP OF BYRAM |
| 59 | 5 | 1.75 | STATE OF NEW JERSEY D.O.T. |
| 59 | 6 | 0.820 | STATE OF NEW JERSEY D.E.P. |
| 83 | 1 | 0.65 | STATE OF NEW JERSEY D.E.P. |
| 70 | 8 | 0.12 | STATE OF NEW JERSEY D.E.P. |

NOTE: LOT ACREAGES SHOWN ABOVE ARE APPROXIMATE AND FOR INFORMATIONAL PURPOSES ONLY.

| | |
|--|------|
| | |
| | |
| | |
| AUGUST 2011 | |
| MARCH 2010 | |
| DATE | DATE |
| REVISED | |
| HAROLD E. PELLOW & ASSOCIATES INC. | |
| HAROLD E. PELLOW - N.J. PROFESSIONAL | |
| ENGINEER & LAND SURVEYOR, LIC. NO. 13229 | |

*THE OVERLAPPING LINES AND DIMENSIONS SHOWN ARE PLOTTED IN ACCORDANCE WITH THE METES AND BOUNDS DESCRIPTIONS APPEARING IN THE LAST DEED OF RECORD FOR EACH PARCEL & DO NOT PURPORT TO REPRESENT TITLE OR OWNERSHIP STATUS IN ANY MANNER. THESE SITUATIONS ARE SUBJECT TO SOLUTION BY THE PROPERTY OWNERS CONCERNED.

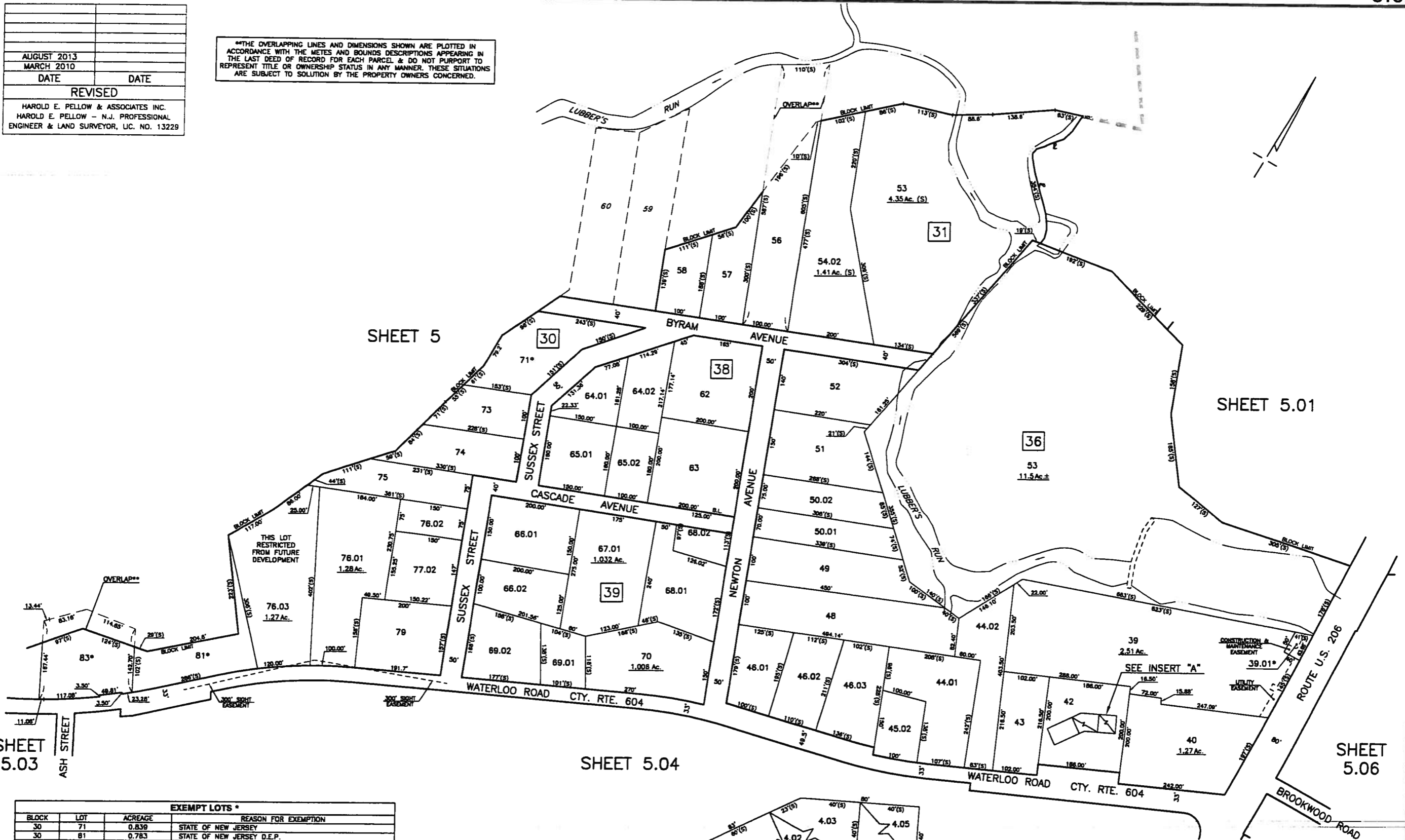


- MAP REFERENCES:
1. THE DETAILS SHOWN ON THESE MAPS ARE BASED ON THE APPROVED ORIGINAL TAX MAPS AND THE GENERAL REVISIONS THERETO, PRIOR TO JUNE 2008. FOR REVISIONS AND CONDITIONS PRIOR TO JUNE 2008, SEE APPROVED ORIGINAL MAPS ON FILE IN THE MUNICIPAL TAX ASSESSOR'S OFFICE.
 2. THE AREAS, BOUNDARIES, AND DIMENSIONS SHOWN ON THESE MAPS ARE DERIVED FROM AERIAL SURVEYS, RECORDED PLANS, MAPS, DEEDS, AND WILLS AND ARE TO BE USED FOR ASSESSMENT PURPOSES ONLY.

TAX MAP
TOWNSHIP OF BYRAM
 SUSSEX COUNTY, NEW JERSEY
 SCALE: 1" = 100' JUNE 2006
 Prepared By
HAROLD E. PELLOW
 NEW JERSEY PROFESSIONAL ENGINEER AND
 LAND SURVEYOR, LIC. #13229
 HAROLD E. PELLOW & ASSOCIATES, INC.
 17 PLAINS ROAD, AUGUSTA, NEW JERSEY
 * TO SHOW CONDITIONS AS OF AUG 2011

| | |
|--|------|
| | |
| | |
| AUGUST 2013 | |
| MARCH 2010 | |
| DATE | DATE |
| REVISED | |
| HAROLD E. PELLOW & ASSOCIATES INC. | |
| HAROLD E. PELLOW - N.J. PROFESSIONAL | |
| ENGINEER & LAND SURVEYOR, U.C. NO. 13229 | |

THE OVERLAPPING LINES AND DIMENSIONS SHOWN ARE PLOTTED IN ACCORDANCE WITH THE METES AND BOUNDS DESCRIPTIONS APPEARING IN THE LAST DEED OF RECORD FOR EACH PARCEL & DO NOT PURPORT TO REPRESENT TITLE OR OWNERSHIP STATUS IN ANY MANNER. THESE SITUATIONS ARE SUBJECT TO SOLUTION BY THE PROPERTY OWNERS CONCERNED.



SHEET 5.03

SHEET 5

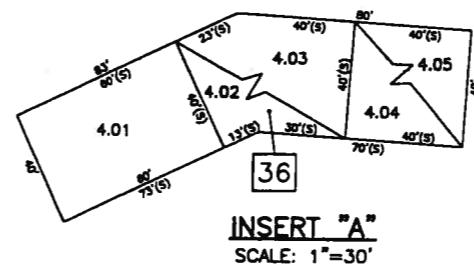
SHEET 5.04

SHEET 5.01

SHEET 5.06

| EXEMPT LOTS * | | | |
|---------------|-------|---------|----------------------------|
| BLOCK | LOT | ACREAGE | REASON FOR EXEMPTION |
| 30 | 71 | 0.839 | STATE OF NEW JERSEY |
| 30 | 81 | 0.783 | STATE OF NEW JERSEY D.E.P. |
| 30 | 83 | 0.872 | STATE OF NEW JERSEY D.E.P. |
| 36 | 39.01 | 0.05 | TOWNSHIP OF BYRAM |

- MAP REFERENCES:
- THE DETAILS SHOWN ON THESE MAPS ARE BASED ON THE APPROVED ORIGINAL TAX MAPS AND THE GENERAL REVISIONS THERETO, PRIOR TO JUNE 2006. FOR REVISIONS AND CONDITIONS PRIOR TO JUNE 2006, SEE APPROVED ORIGINAL MAPS ON FILE IN THE MUNICIPAL TAX ASSESSOR'S OFFICE.
 - THE AREAS, BOUNDARIES, AND DIMENSIONS SHOWN ON THESE MAPS ARE DERIVED FROM AERIAL SURVEYS, RECORDED PLANS, MAPS, DEEDS, AND WILLS AND ARE TO BE USED FOR ASSESSMENT PURPOSES ONLY.



TAX MAP
TOWNSHIP OF BYRAM

SUSSEX COUNTY
SCALE: 1" = 100'

NEW JERSEY
JAN 2008

HAROLD E. PELLOW

NEW JERSEY PROFESSIONAL ENGINEER AND
LAND SURVEYOR U.C. #13229
HAROLD E. PELLOW & ASSOCIATES INC
17 PLAINS ROAD, ALGUSTA, NEW JERSEY
CERTIFICATE OF AUTHORIZATION NO. 2462789000

| EXEMPTED LOTS * | | | |
|-----------------|--------|---------|----------------------------|
| BLOCK | LOT | ACREAGE | REASON FOR EXEMPTION |
| 7 | 244 | 0.344 | TOWNSHIP OF BYRAM |
| 20 | 642.02 | 0.080 | TOWNSHIP OF BYRAM |
| 22 | 223 | 2.661 | STATE OF NEW JERSEY D.E.P. |
| 22.01 | 1 | 3.6 | STATE OF NEW JERSEY D.E.P. |
| 23 | 13.01 | 0.245 | TOWNSHIP OF BYRAM |

NOTE: LOT ACREAGES SHOWN ABOVE ARE APPROXIMATE AND FOR INFORMATIONAL PURPOSES ONLY.

MAP REFERENCES:

- THE DETAILS SHOWN ON THESE MAPS ARE BASED ON THE APPROVED ORIGINAL TAX MAPS AND THE GENERAL REVISIONS THERETO, PRIOR TO JUNE 2006. FOR REVISIONS AND CONDITIONS PRIOR TO JUNE 2006, SEE APPROVED ORIGINAL MAPS ON FILE IN THE MUNICIPAL TAX ASSESSOR'S OFFICE.
- THE AREAS, BOUNDARIES, AND DIMENSIONS SHOWN ON THESE MAPS ARE DERIVED FROM AERIAL SURVEYS, RECORDED PLANS, MAPS, DEEDS, AND WILLS AND ARE TO BE USED FOR ASSESSMENT PURPOSES ONLY.

| | |
|---|------|
| | |
| | |
| | |
| MARCH 2010 | DATE |
| | |
| REVISED | |
| HAROLD E. PELLOW & ASSOCIATES INC. | |
| HAROLD E. PELLOW - N.J. PROFESSIONAL ENGINEER & LAND SURVEYOR, LIC. NO. 13229 | |



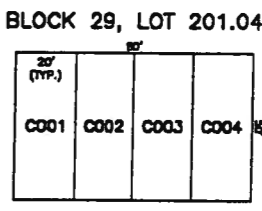
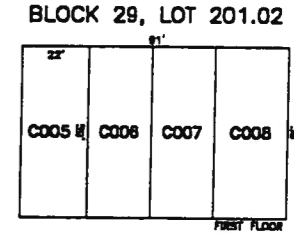
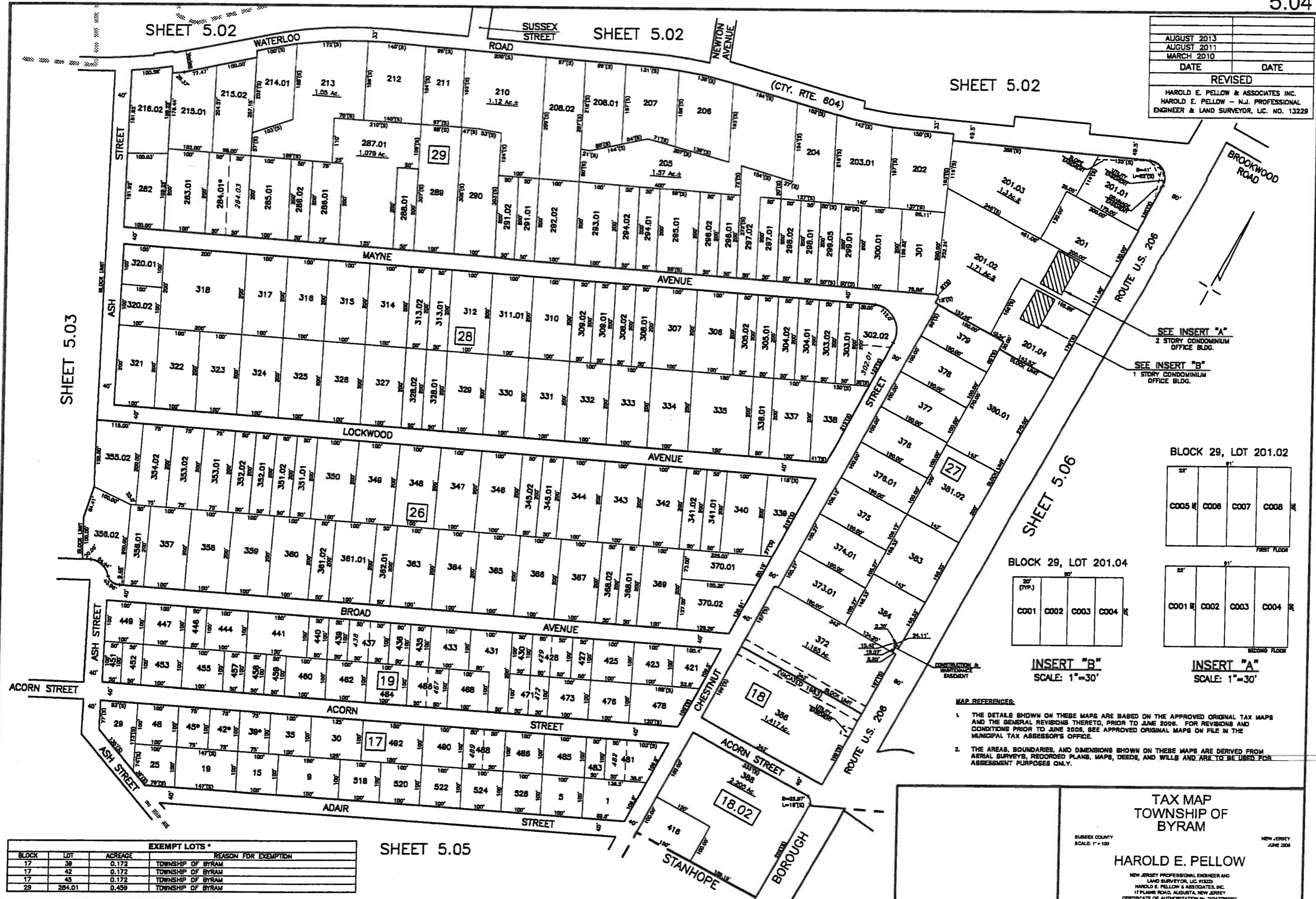
TAX MAP
TOWNSHIP OF BYRAM
 SUSSEX COUNTY, NEW JERSEY
 SCALE: 1" = 100' JUNE 2006
 Prepared By
HAROLD E. PELLOW
 NEW JERSEY PROFESSIONAL ENGINEER AND
 LAND SURVEYOR, LIC. #13229
 HAROLD E. PELLOW & ASSOCIATES, INC.
 17 PLAINS ROAD, AUGUSTA, NEW JERSEY
* TO SHOW COND T.GNS AS OF MAR. 2010

SHEET 5.02

SHEET 5.02

SHEET 5.02

| | |
|--|------|
| AUGUST 2013 | |
| AUGUST 2011 | |
| MARCH 2010 | |
| DATE | DATE |
| REVISED | |
| HAROLD E. PELLOW & ASSOCIATES INC. HAROLD E. PELLOW - N.J. PROFESSIONAL ENGINEER & LAND SURVEYOR, LIC. NO. 13229 | |



INSERT "B" SCALE: 1"=30'

INSERT "A" SCALE: 1"=30'

- MAP REFERENCES:
- THE DETAILS SHOWN ON THESE MAPS ARE BASED ON THE APPROVED ORIGINAL TAX MAPS AND THE GENERAL REVISIONS THERETO, PRIOR TO JUNE 2008. FOR REVISIONS AND CONDITIONS PRIOR TO JUNE 2008, SEE APPROVED ORIGINAL MAPS ON FILE IN THE MUNICIPAL TAX ASSESSOR'S OFFICE.
 - THE AREAS, BOUNDARIES, AND DIMENSIONS SHOWN ON THESE MAPS ARE DERIVED FROM AERIAL SURVEYS, RECORDED PLANS, MAPS, DEEDS, AND WILLS AND ARE TO BE USED FOR ASSESSMENT PURPOSES ONLY.

EXEMPT LOTS *

| BLOCK | LOT | ACREAGE | REASON FOR EXEMPTION |
|-------|--------|---------|----------------------|
| 17 | 39 | 0.172 | TOWNSHIP OF BYRAM |
| 17 | 42 | 0.172 | TOWNSHIP OF BYRAM |
| 17 | 45 | 0.172 | TOWNSHIP OF BYRAM |
| 29 | 284.01 | 0.459 | TOWNSHIP OF BYRAM |

SHEET 5.05

TAX MAP
TOWNSHIP OF
BYRAM

SUSSEX COUNTY
SCALE: 1" = 100'

NEW JERSEY
JUNE 2008

HAROLD E. PELLOW

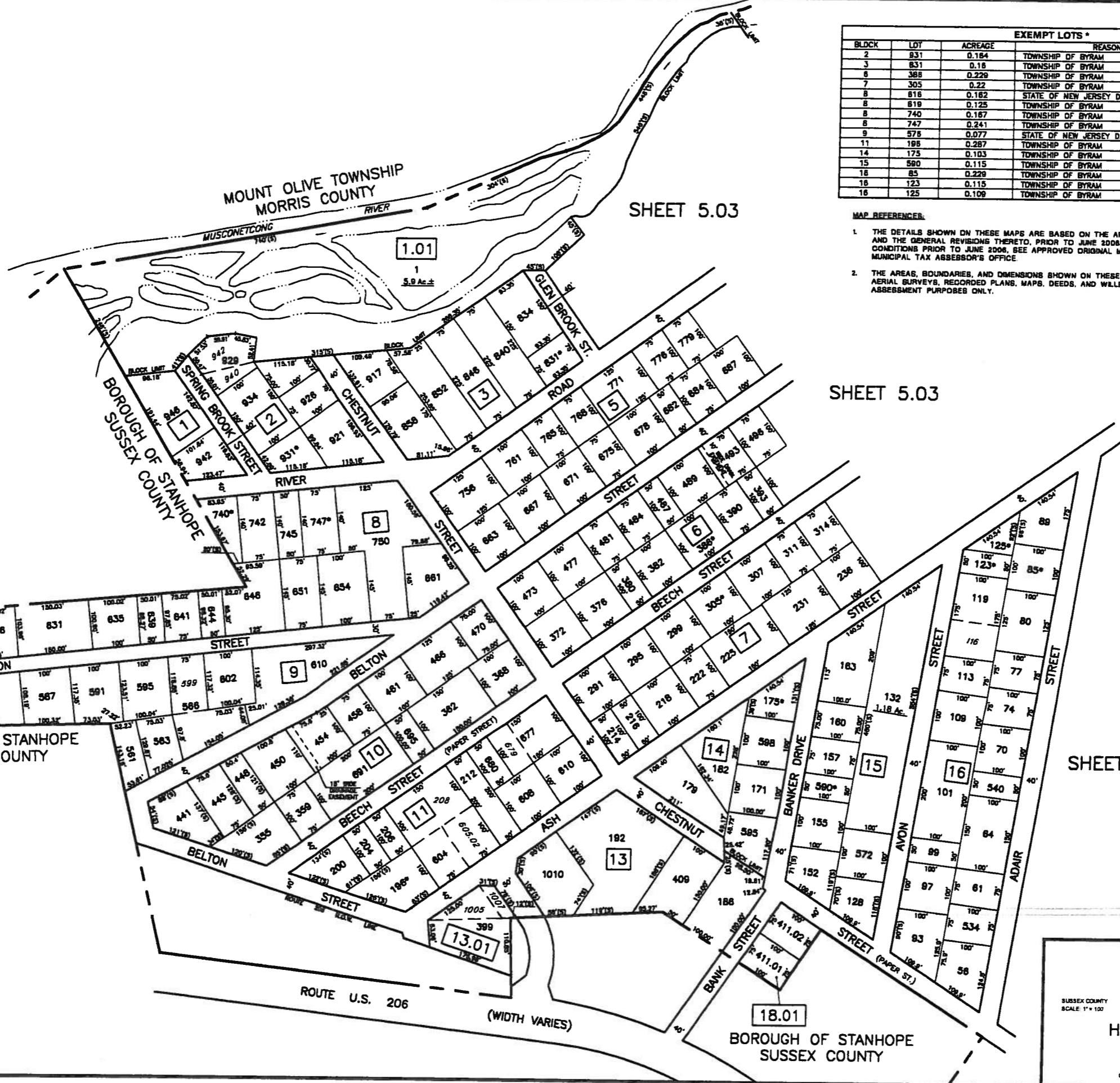
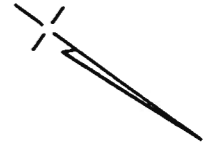
NEW JERSEY PROFESSIONAL ENGINEER AND
LAND SURVEYOR, LIC #13229
HAROLD E. PELLOW & ASSOCIATES, INC.
17 PLAINS ROAD, ALBUSTA, NEW JERSEY
CERTIFICATE OF AUTHORIZATION NO. 2462786202

| | |
|--|------|
| | |
| | |
| | |
| | |
| | |
| | |
| AUGUST 2013 | |
| MARCH 2010 | |
| DATE | DATE |
| REVISED | |
| HAROLD E. PELLOW & ASSOCIATES INC. | |
| HAROLD E. PELLOW - N.J. PROFESSIONAL | |
| ENGINEER & LAND SURVEYOR, L.C. NO. 13229 | |

| EXEMPT LOTS * | | | |
|---------------|-----|---------|----------------------------|
| BLCK | LOT | ACREAGE | REASON FOR EXEMPTION |
| 2 | 931 | 0.184 | TOWNSHIP OF BYRAM |
| 3 | 831 | 0.18 | TOWNSHIP OF BYRAM |
| 8 | 388 | 0.226 | TOWNSHIP OF BYRAM |
| 7 | 305 | 0.22 | TOWNSHIP OF BYRAM |
| 8 | 816 | 0.182 | STATE OF NEW JERSEY D.O.T. |
| 8 | 819 | 0.125 | TOWNSHIP OF BYRAM |
| 8 | 740 | 0.187 | TOWNSHIP OF BYRAM |
| 8 | 747 | 0.241 | TOWNSHIP OF BYRAM |
| 9 | 578 | 0.077 | STATE OF NEW JERSEY D.O.T. |
| 11 | 198 | 0.287 | TOWNSHIP OF BYRAM |
| 14 | 175 | 0.103 | TOWNSHIP OF BYRAM |
| 15 | 580 | 0.115 | TOWNSHIP OF BYRAM |
| 18 | 85 | 0.228 | TOWNSHIP OF BYRAM |
| 18 | 123 | 0.115 | TOWNSHIP OF BYRAM |
| 18 | 125 | 0.109 | TOWNSHIP OF BYRAM |

MAP REFERENCES:

- THE DETAILS SHOWN ON THESE MAPS ARE BASED ON THE APPROVED ORIGINAL TAX MAPS AND THE GENERAL REVISIONS THERETO, PRIOR TO JUNE 2008. FOR REVISIONS AND CONDITIONS PRIOR TO JUNE 2008, SEE APPROVED ORIGINAL MAPS ON FILE IN THE MUNICIPAL TAX ASSESSOR'S OFFICE.
- THE AREAS, BOUNDARIES, AND DIMENSIONS SHOWN ON THESE MAPS ARE DERIVED FROM AERIAL SURVEYS, RECORDED PLANS, MAPS, DEEDS, AND WILLS AND ARE TO BE USED FOR ASSESSMENT PURPOSES ONLY.



BOROUGH OF STANHOPE
SUSSEX COUNTY

TAX MAP
TOWNSHIP OF
BYRAM

SUSSEX COUNTY
SCALE: 1" = 100'

NEW JERSEY
JUNE 2008

HAROLD E. PELLOW

NEW JERSEY PROFESSIONAL ENGINEER AND
LAND SURVEYOR, L.C. #13229
HAROLD E. PELLOW & ASSOCIATES, INC.
17 PLAINS ROAD, AUGUSTA, NEW JERSEY
CERTIFICATE OF AUTHORIZATION No. 24842786900

| | |
|--|------|
| | |
| AUGUST 2011 | |
| MARCH 2010 | |
| JULY 2009 | |
| DATE | DATE |
| REVISED | |
| HAROLD E. PELLOW & ASSOCIATES INC. HAROLD E. PELLOW - N.J. PROFESSIONAL ENGINEER & LAND SURVEYOR, LIC. NO. 13229 | |

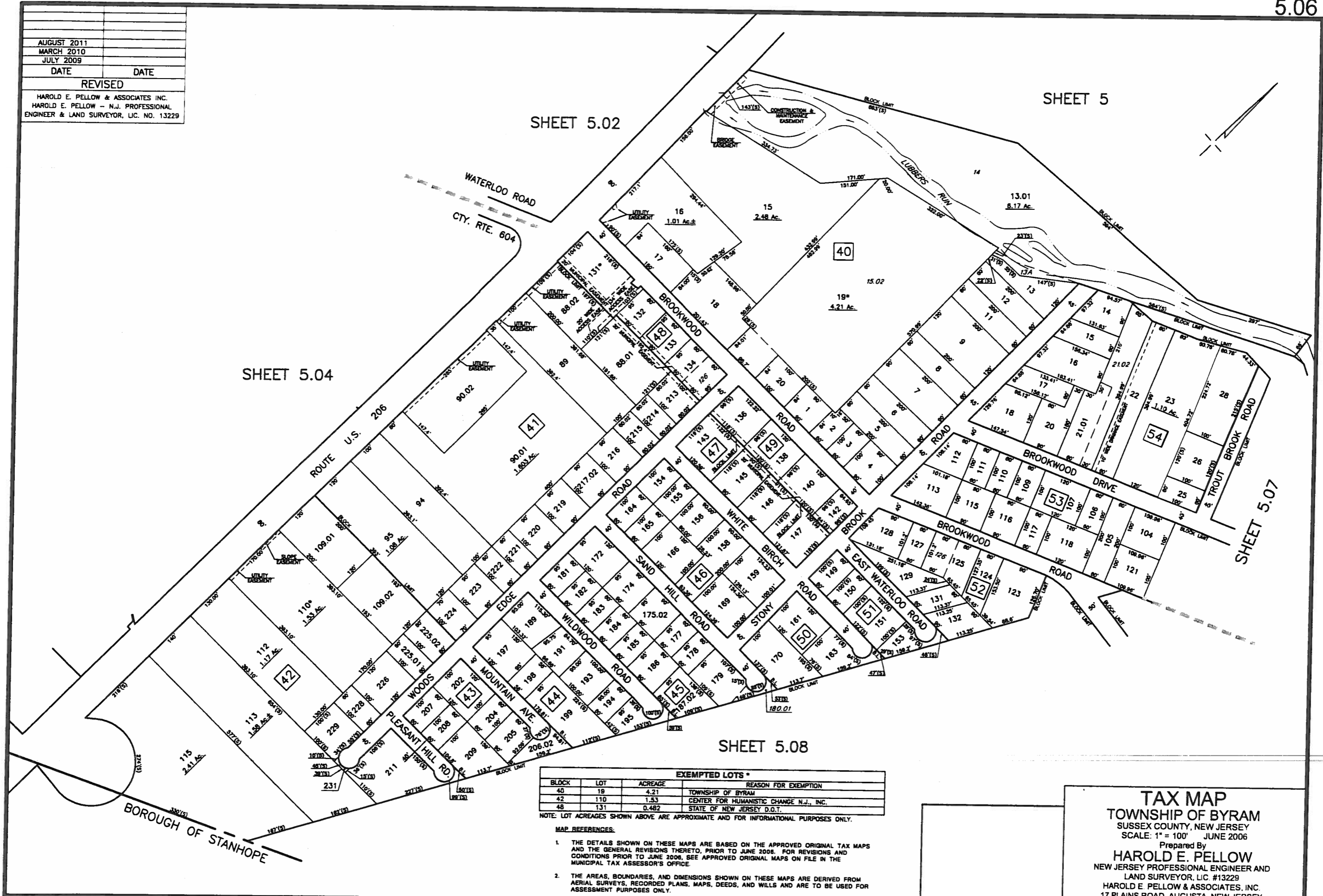
SHEET 5

SHEET 5.02

SHEET 5.04

SHEET 5.08

SHEET 5.07



EXEMPTED LOTS *

| BLOCK | LOT | ACREAGE | REASON FOR EXEMPTION |
|-------|-----|---------|---|
| 40 | 18 | 4.21 | TOWNSHIP OF BYRAM |
| 42 | 110 | 1.53 | CENTER FOR HUMANISTIC CHANGE N.J., INC. |
| 48 | 131 | 0.482 | STATE OF NEW JERSEY D.O.T. |

NOTE: LOT ACREAGES SHOWN ABOVE ARE APPROXIMATE AND FOR INFORMATIONAL PURPOSES ONLY.

MAP REFERENCES:

- THE DETAILS SHOWN ON THESE MAPS ARE BASED ON THE APPROVED ORIGINAL TAX MAPS AND THE GENERAL REVISIONS THERETO, PRIOR TO JUNE 2008. FOR REVISIONS AND CONDITIONS PRIOR TO JUNE 2008, SEE APPROVED ORIGINAL MAPS ON FILE IN THE MUNICIPAL TAX ASSESSOR'S OFFICE.
- THE AREAS, BOUNDARIES, AND DIMENSIONS SHOWN ON THESE MAPS ARE DERIVED FROM AERIAL SURVEYS, RECORDED PLANS, MAPS, DEEDS, AND WILLS AND ARE TO BE USED FOR ASSESSMENT PURPOSES ONLY.

TAX MAP
 TOWNSHIP OF BYRAM
 SUSSEX COUNTY, NEW JERSEY
 SCALE: 1" = 100' JUNE 2006
 Prepared By
HAROLD E. PELLOW
 NEW JERSEY PROFESSIONAL ENGINEER AND
 LAND SURVEYOR, LIC. #13229
 HAROLD E. PELLOW & ASSOCIATES, INC.
 17 PLAINS ROAD, AUGUSTA, NEW JERSEY
 * TO SHOW CONDITIONS AS OF AUG 2011

SHEET 5.06

SHEET 5

SHEET 5

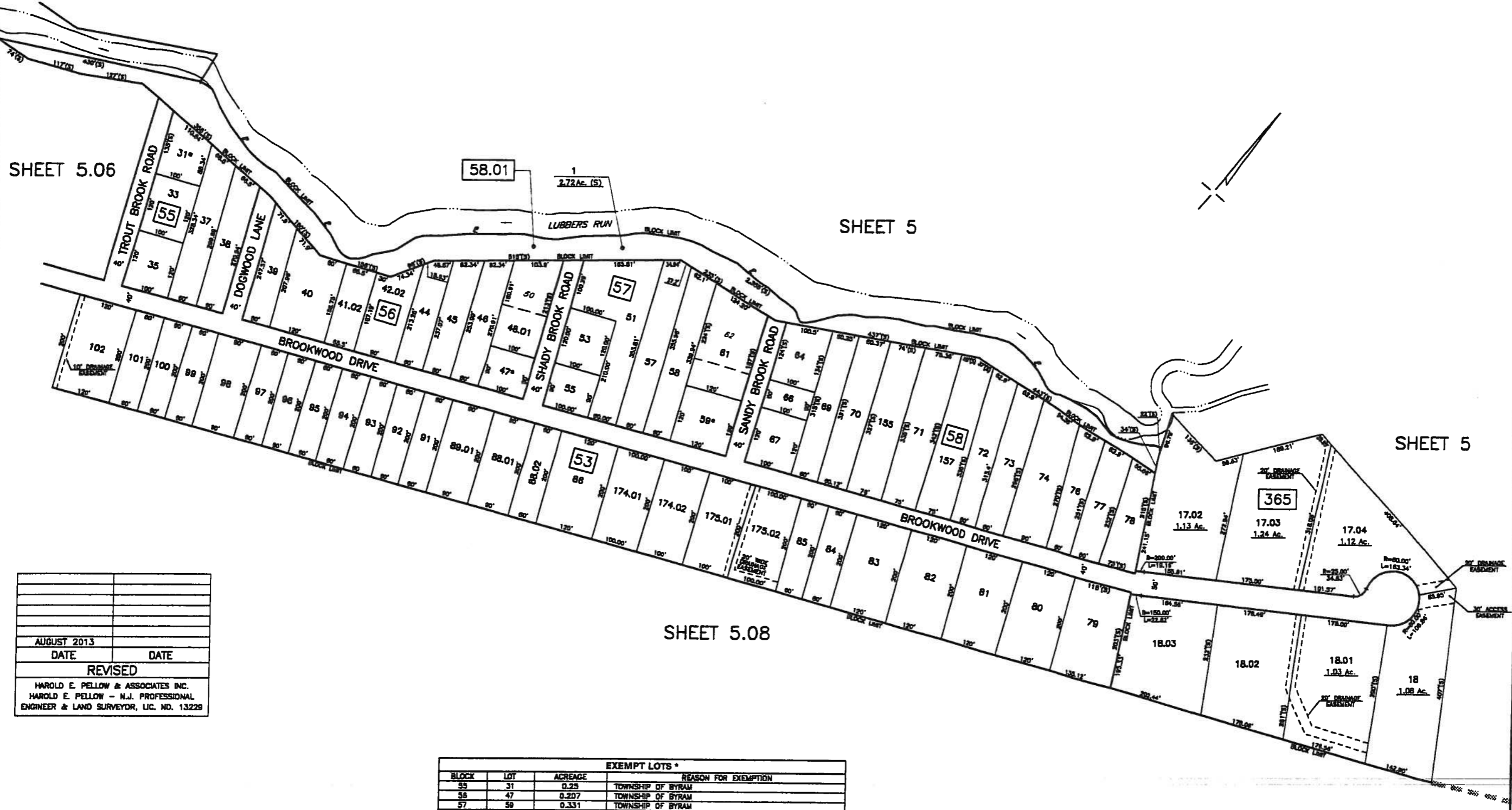
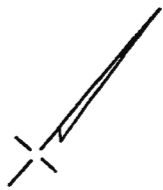
SHEET 5.08

| | |
|--|------|
| | |
| | |
| | |
| AUGUST 2013 | |
| DATE | DATE |
| REVISED | |
| HAROLD E. PELLOW & ASSOCIATES INC. | |
| HAROLD E. PELLOW - N.J. PROFESSIONAL | |
| ENGINEER & LAND SURVEYOR, LIC. NO. 13229 | |

| EXEMPT LOTS * | | | | |
|---------------|-----|---------|----------------------|--|
| BLOCK | LOT | ACREAGE | REASON FOR EXEMPTION | |
| 55 | 31 | 0.25 | TOWNSHIP OF BYRAM | |
| 56 | 47 | 0.207 | TOWNSHIP OF BYRAM | |
| 57 | 59 | 0.351 | TOWNSHIP OF BYRAM | |

MAP REFERENCES:

- THE DETAILS SHOWN ON THESE MAPS ARE BASED ON THE APPROVED ORIGINAL TAX MAPS AND THE GENERAL REVISIONS THERETO, PRIOR TO JUNE 2006. FOR REVISIONS AND CONDITIONS PRIOR TO JUNE 2006, SEE APPROVED ORIGINAL MAPS ON FILE IN THE MUNICIPAL TAX ASSESSOR'S OFFICE.
- THE AREAS, BOUNDARIES, AND DIMENSIONS SHOWN ON THESE MAPS ARE DERIVED FROM AERIAL SURVEYS, RECORDED PLANS, MAPS, DEEDS, AND WILLS AND ARE TO BE USED FOR ASSESSMENT PURPOSES ONLY.



TAX MAP
TOWNSHIP OF BYRAM

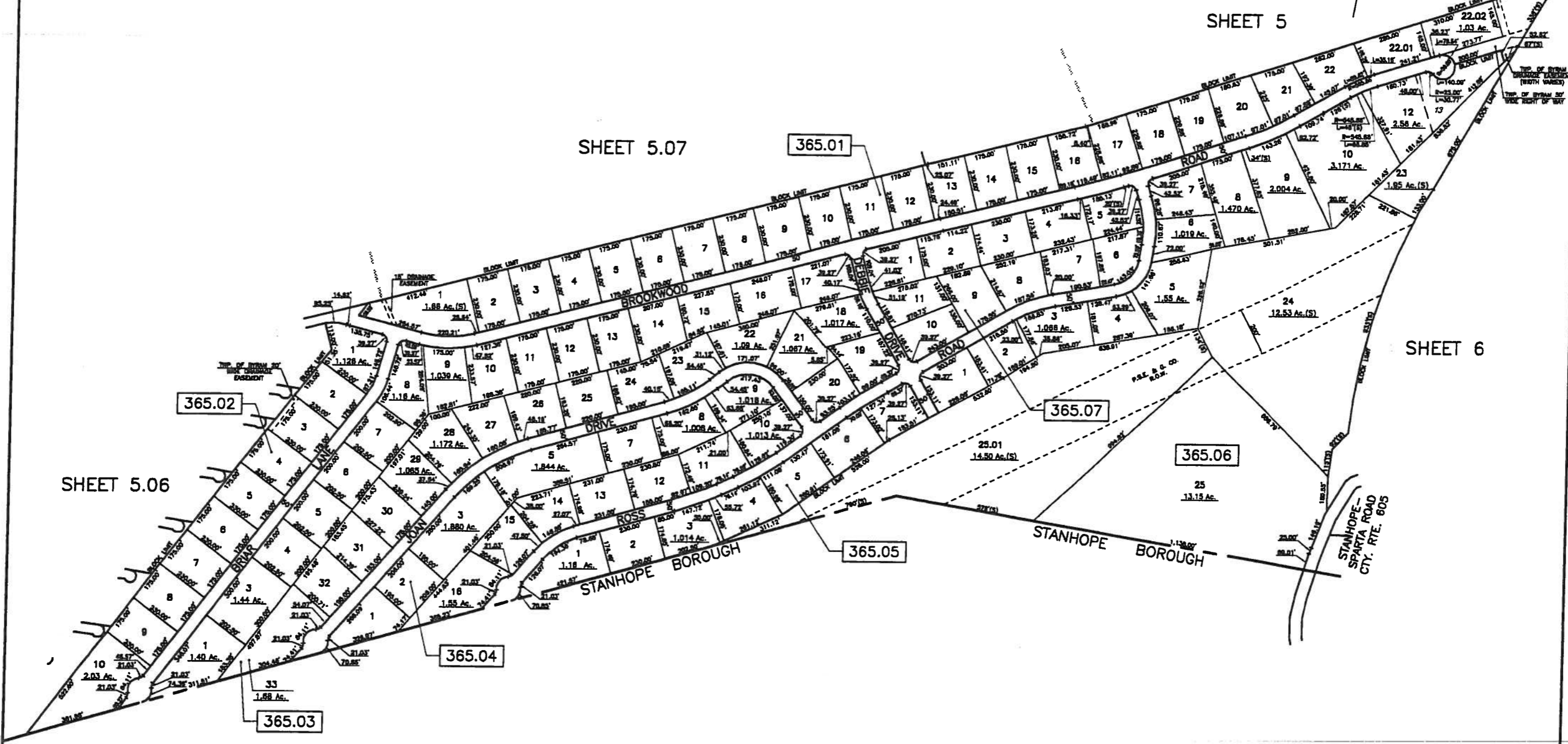
SUSSEX COUNTY
SCALE: 1" = 100'

NEW JERSEY
JUNE 2006

HAROLD E. PELLOW

NEW JERSEY PROFESSIONAL ENGINEER AND
LAND SURVEYOR, LIC. #13229
HAROLD E. PELLOW & ASSOCIATES, INC.
17 PLAINS ROAD, ALMORSTA, NEW JERSEY
CERTIFICATE OF AUTHORIZATION No. 2464298200

| | |
|--|------|
| | |
| | |
| | |
| | |
| | |
| | |
| | |
| | |
| AUGUST 2013 | |
| DATE | DATE |
| REVISED | |
| HAROLD E. PELLOW & ASSOCIATES INC. | |
| HAROLD E. PELLOW - N.J. PROFESSIONAL | |
| ENGINEER & LAND SURVEYOR, LIC. NO. 13229 | |



| EXEMPT LOTS * | | | |
|---------------|-------|---------|----------------------|
| BLOCK | LOT | ACREAGE | REASON FOR EXEMPTION |
| 365.01 | 22.03 | 2.87 | TOWNSHIP OF BYRAM |

- MAP REFERENCES:
1. THE DETAILS SHOWN ON THESE MAPS ARE BASED ON THE APPROVED ORIGINAL TAX MAPS AND THE GENERAL REVISIONS THERETO, PRIOR TO JUNE 2008. FOR REVISIONS AND CONDITIONS PRIOR TO JUNE 2008, SEE APPROVED ORIGINAL MAPS ON FILE IN THE MUNICIPAL TAX ASSESSOR'S OFFICE.
 2. THE AREAS, BOUNDARIES, AND DIMENSIONS SHOWN ON THESE MAPS ARE DERIVED FROM AERIAL SURVEYS, RECORDED PLANS, MAPS, DEEDS, AND WILLS AND ARE TO BE USED FOR ASSESSMENT PURPOSES ONLY.

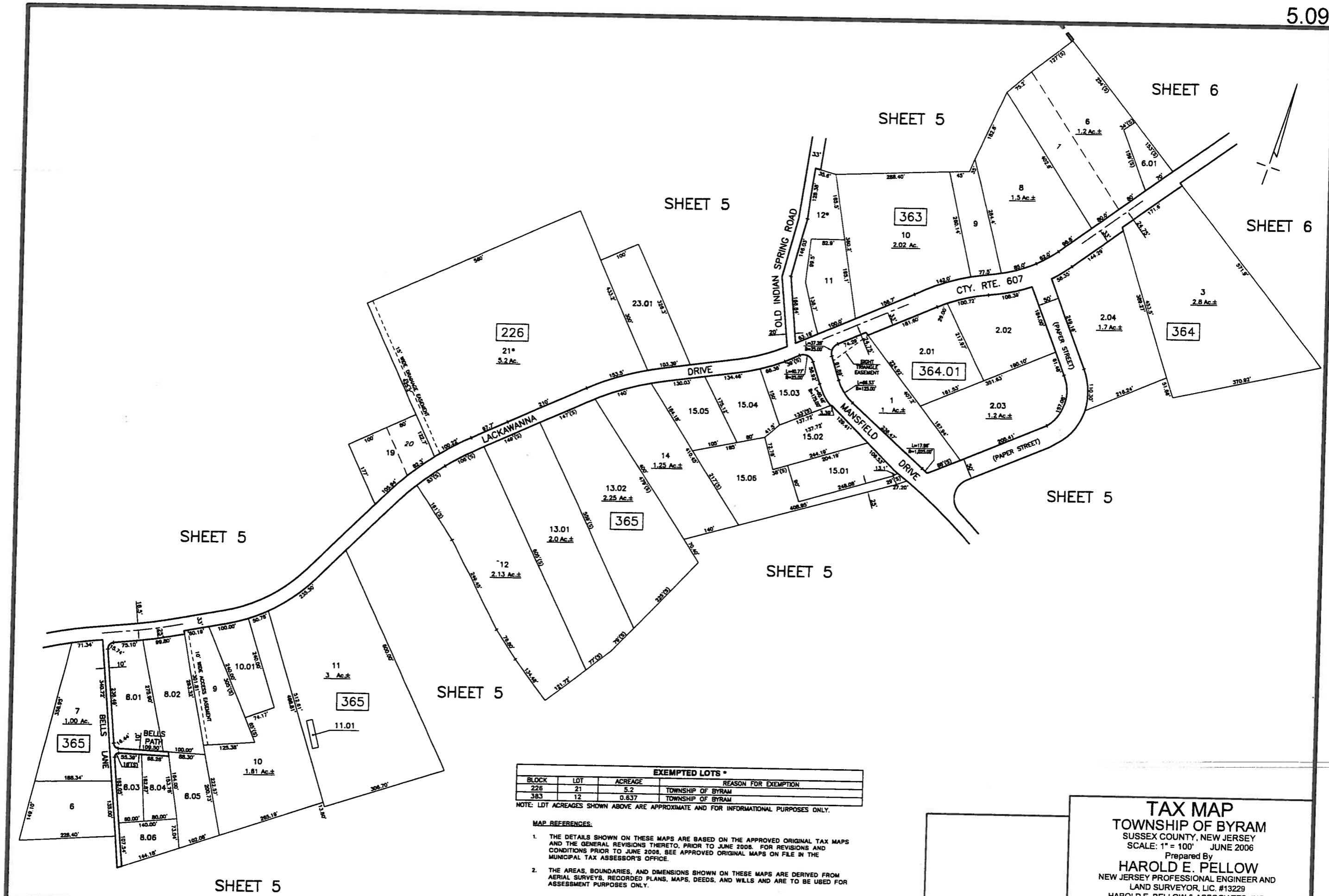
TAX MAP
TOWNSHIP OF BYRAM

SUBSEX COUNTY
SCALE: 1" = 200'

HAROLD E. PELLOW

NEW JERSEY PROFESSIONAL ENGINEER AND
LAND SURVEYOR, LIC. #13229
HAROLD E. PELLOW & ASSOCIATES, INC.
17 PLAINS ROAD, AUGUSTA, NEW JERSEY
CERTIFICATE OF AUTHORIZATION NO. 24642769300

NEW JERSEY
JUNE 2008



EXEMPTED LOTS *

| BLOCK | LOT | ACREAGE | REASON FOR EXEMPTION |
|-------|-----|---------|----------------------|
| 226 | 21 | 5.2 | TOWNSHIP OF BYRAM |
| 383 | 12 | 0.637 | TOWNSHIP OF BYRAM |

NOTE: LDT ACREAGES SHOWN ABOVE ARE APPROXIMATE AND FOR INFORMATIONAL PURPOSES ONLY.

- MAP REFERENCES:**
- THE DETAILS SHOWN ON THESE MAPS ARE BASED ON THE APPROVED ORIGINAL TAX MAPS AND THE GENERAL REVISIONS THERETO, PRIOR TO JUNE 2006. FOR REVISIONS AND CONDITIONS PRIOR TO JUNE 2006, SEE APPROVED ORIGINAL MAPS ON FILE IN THE MUNICIPAL TAX ASSESSOR'S OFFICE.
 - THE AREAS, BOUNDARIES, AND DIMENSIONS SHOWN ON THESE MAPS ARE DERIVED FROM AERIAL SURVEYS, RECORDED PLANS, MAPS, DEEDS, AND WILLS AND ARE TO BE USED FOR ASSESSMENT PURPOSES ONLY.

TAX MAP
TOWNSHIP OF BYRAM
 SUSSEX COUNTY, NEW JERSEY
 SCALE: 1" = 100' JUNE 2006
 Prepared By
HAROLD E. PELLOW
 NEW JERSEY PROFESSIONAL ENGINEER AND
 LAND SURVEYOR, LIC. #13229
 HAROLD E. PELLOW & ASSOCIATES, INC.
 17 PLAINS ROAD, AUGUSTA, NEW JERSEY
 * TO SHOW CONDITIONS AS OF JUNE 2006